



LET'S CONNECT

For more information on how our capabilities can accommodate your needs, contact us at:

Texas International Terminals

4800 Port Industrial Road
Galveston, Texas 77554

Mailing address:

P.O. Box 17017
Galveston, Texas 77552

Main line: 409-762-5400

titerminals.com

Skip Hastings

Vice President of Commerical Development

O: 409-762-1915

C: 281-380-3058

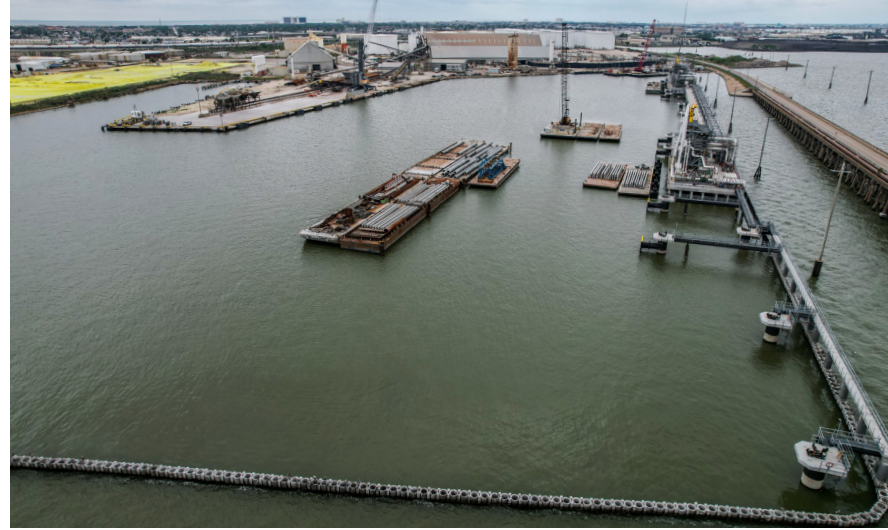
E: shastings@titerminals.com



WHERE WORLD MARKETS CONNECT



★
A VITAL PART OF THE GLOBAL ECONOMY'S SUPPLY CHAIN, TEXAS INTERNATIONAL TERMINALS IS A WORLD-CLASS LIQUID AND DRY BULK MULTI-MODAL FACILITY FOR DEEP DRAFT VESSEL, UNIT TRAIN, MANIFEST RAIL, BARGE, AND TRUCKING ALONG THE GALVESTON SHIP CHANNEL.



We offer the capability for liquid transfer and storage, dry bulk handling and storage as well as layberth facilities for all vessels. We are an independent, full service terminal operator, stevedore and material handler providing unmatched versatility in transportation methods. Our single facility, centrally located on the United States Gulf Coast, features rail, marine and highway connectivity to efficiently link clients with both the global and the domestic marketplace.

OUR INFRASTRUCTURE TODAY—EXPANDING FOR TOMORROW

Marine

Current deep draft vessel berth – 40 ft max draft; 760 ft LOA Panamax and ocean-going barges

New ship docks #3 and #4 – 40 ft max draft and LOA capable of berthing up to Suezmax class vessels

Products loading up to 20,000 bph

Crude oil unloading

Three barge berths – 15 ft max draft; 650 ft LOA

Marine vapor recovery

Located within Foreign Trade Zone #36

Berth #1 – 40 ft draft; 760 ft LOA Panamax
Berth #3 – 40 ft draft*; 850 ft LOA Aframax
Berth #4 – 40 ft draft*; 910 ft LOA Suezmax
*45 ft draft at Berths #3 and #4 in Q323

Rail

UP and BNSF direct access

Liquid manifest and unit train capabilities – 160 car spots onsite

Dry bulk manifest and unit train capabilities

11,000 feet of onsite rail trackage – two independent rail loops

Crude oil and ethanol discharge systems

Rail discharge rate – up to 15,000 bph

20,000 feet of off-site unit train landing track

10,000 feet of off-site manifest capacity

Liquid Bulk

5.6 mmbbls of storage capacity currently in service

2.9 mmbbls of immediate expansion capabilities

Additional ~10 mmbbls available on adjacent acreage

280+ mmbbls of permitted annual throughput capacity

Blending operations

Dry Bulk

4 warehouses

270,000 tons of covered storage

High-speed conveyors

Truck loading and unloading

Largest, most powerful mobile harbor crane in North America - Liebherr Model 600 with a lifting capacity of 208 tons

One of the Largest Rail Unloading Systems in North America

With 8 miles of private rail, Texas International Terminals offers one of the largest liquid rail unloading systems in North America. We have 160 rail offload spots for liquids and can receive unit trains with some of the largest car counts in the U.S. market. We have close working relationships with both major Class I railroads — Union Pacific and BNSF. We set the gold standard for unit trains in the Gulf of Mexico:

Offload liquid trains in 24-hours or less

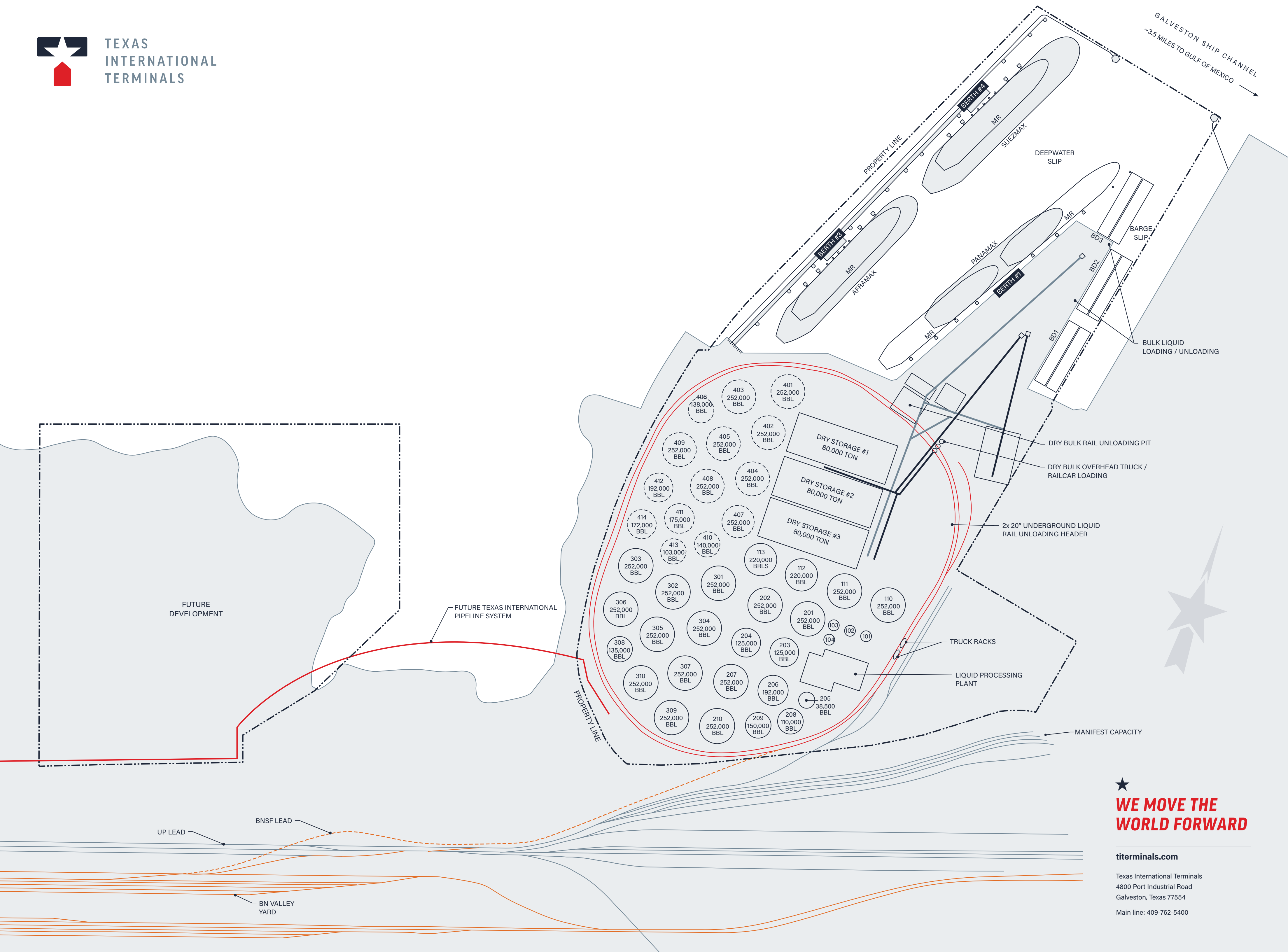
UP and BNSF trains keep mainline power throughout discharge

Texas International Terminals is also equipped with our own power (locomotives)

Delivering Clear Advantages 365 Days a Year

At mile 3.5 on the Galveston Ship Channel, which opens directly into blue water and utilizes an independent pilot association, Texas International Terminal provides efficient despatch 365 days a year. Our unique logistical position offers minimal congestion, allowing ships to get in and out faster. In addition, fog tends to dissipate from Galveston Ship Channel more quickly than other channels in the area. Transit times to our marine berths are less than two hours from anchorage near the Galveston Ship Channel, allowing for superior logistics and fluidity to berth. With marine berths that are centrally located between all major U.S. Gulf Coast ports, we ensure exceptional logistics should cargo need to be parceled out or aggregation of various grades and origins.

GALVESTON SHIP CHANNEL
~3.5 MILES TO GULF OF MEXICO



**★ WE MOVE THE
WORLD FORWARD**

titerminals.com
Texas International Terminals
4800 Port Industrial Road
Galveston, Texas 77554
Main line: 409-762-5400